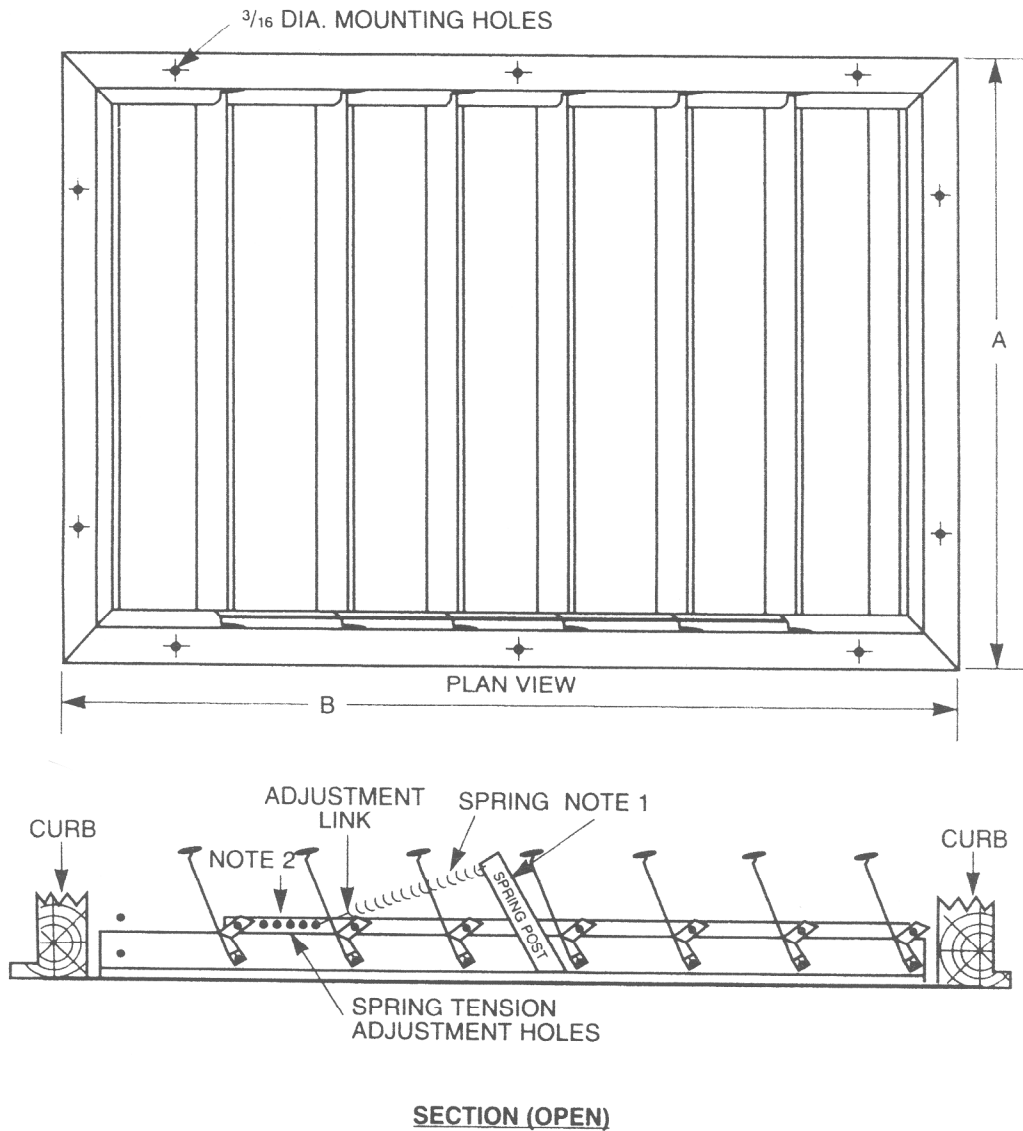


INSTALLATION INSTRUCTIONS FOR CEILING SHUTTER – MODEL 610-A



1. Lift Spring Post into position and snap-lock to edge of frame and connect spring to adjustment link.
2. Adjust spring tension with shutter lying flat on floor by moving the hook from one hole to another hole in the tierod until the blades of the shutter just close. This adjustment is important.
3. Cut hole in ceiling two inches smaller than dimension A and B. For example, a 34" x 42" shutter requires a 32" x 40" hole. Center shutter in hole as evenly as possible when mounting.
4. Do not force shutter into opening. Blades must operate as freely when installed as it did before installation.
5. Mounting surface should be as level as possible to avoid twisting the shutter frame. In cases of uneven mounting surface leave mounting screws slightly loose.